

# Fuyu No Uta

Japanese Folk Song  
Arr. Rachel Stenson

Allegro ♩ = c. 120

Wind Chimes

Piano

11

1

2

*mf*

Yu - ki ya kon - ko fut - te-wa

*mf*

A - ra-re ya kon - ko fut - te-wa

19

fut - te-wa zun - zun tsu - mo-ru. Ya - ma mo no-ha - ra

fut - te-wa zun - zun tsu - mo-ru. wa - ta-bo-shi

It is illegal to duplicate this piece by photocopying or any other means.  
Those violating the copyright will be punished to the full extent of the law.  
© Copyright 2011 for ALL COUNTRIES by Santa Barbara Music Publishing, Inc.  
Printed in the U.S.A.

ka - re - ki no - ku - ra - zu ha - na ga sa - ku.  
 ka - bu - ri ka - re - ki no - ku - ra - zu ha - na ga sa - ku.

30  
 Part 1 *mp*

Snow is fall - ing, Kon - ko. kon - ko

*mp*

*Lea* \* *Lea* \*

38  
 Snow fall - ing soft - ly\_\_ zun - zun\_\_ zun - zun zun Snow on moun - tains,

*Lea* \* *Lea* \* *Lea* \* *Lea* \*

(Part 1)

kon - ko, kon - ko, Snow flow - ers danc - ing — zun - zun zun

45 A little slower, with expression ♩ = 100

zun.

51

1 *mf* A - ra-re ya kon - ko,  
2 Yu - ki ya kon - ko, a - ra-re ya kon - ko,

59

kon - ko ma - da fu - ri ya - ma-nu.  
fut - te-mo, fut - te-mo, ma - da fu - ri ya - ma-nu. Snow is fall - ing,

Sil - ver feath - ers kon - ko, Zun, zun  
 kon - ko, sil - ver feath - ers kon - ko, Cold win - ter wind, and the

snow is fall - ing down.  
 snow is fall - ing down.

**For Perusal Only**

*And* \*

70 Allegro

*mf*

76

*mf*

Yu - ki kon - ko, Yu - ki kon - ko, fut - te - wa

*f*

Yu - ki ya kon - ko, a - ra-re ya kon - ko, fut - te - wa

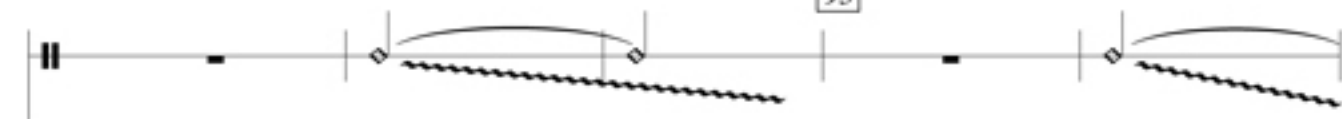
84

fut - te - wa zun zun tsu - mo-ru. Yu - ki kon - ko,

fut - te - wa zun zun tsu - mo-ru ya - ma mo no - ha - ra mo

yu - ki kon - ko ka - re - ki no - ku ra - zu

wa - ta - bo - shi ka - bu - ri, ka - re - ki no - ku ra - zu



ba - na gi - si - ko. Kon - ko

ba - na gi - si - ko. zun zun zun zun

**© protection**

*mp* Kon - ko *p* kon - ko *f* zun zun.

*mp* zun *f* zun zun zun zun zun zun zun.

*f*