

CANTATE DOMINO, Cobb
SBMP 1800

SATB
piano

Cantate Domino

*by
Nancy Hill Cobb*



Santa Barbara Music Publishing, Inc.

sbmp.com

About the composer

Nancy Hill Cobb (b. 1951) retired in 2019 from a 44-year career as a university administrator and professor of composition and conducting. Cobb's published choral compositions have been performed throughout the United States and world-wide, including in Denmark, New Zealand, Japan, France, and Germany. Her choral/orchestral work Threnody won the honor of Special Distinction in the 1999 ASCAP Rudolph Nissim Orchestral Competition. In July 2021, her full-length musical entitled The Suffragist (book and lyrics by Cavan Hallman) premiered at the Gallagher Bluedorn Performing Arts Center in Cedar Falls, Iowa. The Suffragist highlights the dramatic stories of the last ten years of the suffrage fight in the United States (1910-1920) and the women who risked everything for the fight. Her orchestral commission, Shades and Illumination, was premiered by Orchestra Iowa in Cedar Rapids, Iowa in May 2023 as a part of their Centennial Celebration.

The text from Psalm 95

Cantate Domino canticum novum,
cantate Domino omnis terra.

Cantate Domino,
benedicite nomini ejus.

Anuntiate inter gentes gloriam tuam,
in omnibus populis mirabilia ejus.

Quoniam magnus dominum
et laudabilis nimis.

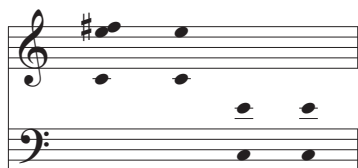
Sing to the Lord a new song,
sing to the Lord all the earth.

Sing to the Lord,
bless his name.

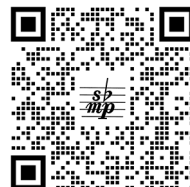
Declare his glory among the nations
his wonders among all people.

For the Lord is great
and greatly to be praised.

Ranges



S A T B



recording and rehearsal tracks available at sbmp.com

Cantate Domino

Traditional Latin

Nancy Hill Cobb

Joyfully ♩. = 68

Piano *f*

4 SA unis. *mf*

Can - ta - te Do - mi - no can - ti - cum no - vum, can - ta - te Dom - i - no

*Leg. * Leg. sim.*

7 *f*

om - nis ter - ra. Can - ta - te Do - mi - no, can - ta - te Do - mi - no,

*Leg. * Leg. * sim.*

10 *mf*

al - le - lu, al - le - lu, al - le - lu - ia.

*Leg. * Leg. * Leg. * Leg. **

It is illegal to duplicate this piece by photocopying or any other means.

Those violating the copyright will be punished to the full extent of the law.

© Copyright 2024 for ALL COUNTRIES by Santa Barbara Music Publishing, Inc.

Printed in the U.S.A.

1800-3

14

S
A

Can - ta - te Do - mi - no, can - ta - te

T
B

Can - ta - te Do - mi - no can - ti - cum nov - um, can - ta - te Do - mi - no

mf

Leg. * *sim.*

17

This section of the score is not included for copyright protection.
© Copyright 2024 for ALL COUNTRIES by Santa Barbara Music Publishing, Inc.

Leg. * *sim.*

20

al - le - lu, al - le - lu, al - le - lu - ia.

al - le - lu, al - le - lu, al - le - lu - ia.

mf

mf

mf

Leg. * *Leg.* * *Leg.* * *Leg.* *

23

sim. *p*

*Lea * Lea * Lea * Lea * Lea * sim.*

27

p *mp*

Can - ta - te Do - mi - no - - - - - bi - ne - di - ci - te no - mi - ne e - jus. An -

mp

*Lea * Lea * sim.*

32

nun - ti - a - te in - ter gen - tes glo - ri - am tu - am.

nun - ti - a - te in - ter gen - tes glo - ri - am tu - am

mp

*Lea * Lea * Lea * Lea * Lea * Lea **

36 *mf* *p*

Quo - ni - am mag - nus Do - mi - num, quo - ni - am mag - nus Do - mi - num, et

mf

Quo - ni - am mag - nus Do - mi - num, quo - ni - am mag - nus Do - mi - num,

mf

sim.

40 *mp*

laud - a - bil - is nim - is, laud - a - bil - is nim - is,

p *mp*

Et laud - a - bil - is nim - is, et laud - a - bil - is

p *mp*

Leg. * *Leg.*

45 *f*

et laud - a - bi - lis nim - is, nim - is.

f

nim - is, et laud - a - bi - lis nim - is, nim - is.

f

* *Leg.* * *Leg.* *

50

f
Ped. * Ped. * Ped. * Ped. * Ped. *

53 SA unis. *mf*
Can - ta - te Do - mi - no can - ti - cum ro - tum, can - ta - te Do - mi - no
TB unis. *mf*
Can - ta - te Do - mi - no, can - ta - te

mf
Ped. * *sim.*

56
om - nis ter - ra Can - ta - te Do - mi - no, can - ta - te Do - mi - no,
Do - mi no. Can - ta - te Do - mi - no, can - ta - te Do - mi - no,

This section of the score is not included for copyright protection.
© Copyright 2024 for ALL COUNTRIES by Santa Barbara Music Publishing, Inc.

al - le-lu, al - le-lu, Al - le-lu, al - le-lu,
 al - le-lu, al - le-lu, Al - le-lu, al - le-lu,
sans ped. *Leg.* * *Leg.* *

f Al - le-lu, al - le-lu - ia. *ff* Al - le -
f Al - le-lu, al - le-lu - ia. *ff* Al - le -
f *ff*
Leg. * *Leg.* * *Leg.* * *Leg.* *

lu - ia.
 lu - ia.
Leg. * *Leg.* * *sim.*

PREVIEW



SBMP 1800 Code C8
 7 85147 87046 3