

THE GIFT TO SING, Peterson
SBMP 1748

SSA
piano

The Gift To Sing

Text by
James Weldon Johnson

Music by
Coleman Peterson



Santa Barbara Music Publishing, Inc.

sbmp.com



About the composer

Coleman Peterson (b. 1997) is a South-Dakota-based composer, lyricist, and educator. A recent graduate of Augustana University with degrees in music, theatre, and elementary education, he enjoys writing, teaching, and creating for an extensive number of genres. Through all his creations, he enjoys representing both himself and his generation through language, time, and sound.

The Gift to Sing

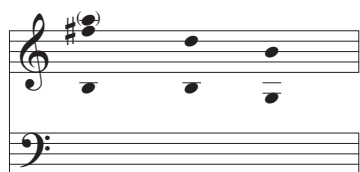
James Weldon Johnson (1871-1938)

Sometimes the mist overhangs my path,
And blackening clouds about me cling;
But, oh, I have a magic way
To turn the gloom to cheerful day—
I softly sing.

And if the way grows darker still,
Shadowed by Sorrow's somber wing,
With glad defiance in my throat,
I pierce the darkness with a note,
And sing, and sing.

I brood not over the broken path,
Nor dread whatever time may bring;
No nights are dark, no days are long,
While in my heart there swells a song,
And I can sing.

Ranges



S S A



recording and rehearsal tracks available at sbmp.com

Awarded the 2020 Kyle Pederson Composition Prize
and dedicated to the Augustana University treble ensemble, Angelus

The Gift to Sing

James Weldon Johnson

Coleman Peterson

Contemplative ♩ = 75

mp

S
S
A

Some-
Some-
Some-

Contemplative ♩ = 75

Piano

mp

5

times the __ mist __ o-ver-hangs my __ path, __ And black-'ning __ clouds a-round me __

times the __ mist __ o-ver-hangs my __ path, __ And black-'ning __ clouds a-round me __

times the __ mist __ o-ver-hangs my __ path, __ And black'ning __ clouds a-round me __

It is illegal to duplicate this piece by photocopying or any other means.

Those violating the copyright will be punished to the full extent of the law.

© Copyright 2023 for ALL COUNTRIES by Santa Barbara Music Publishing, Inc.

Printed in the U.S.A.

1748-3

8

— cling;— But, oh, I have a mag-ic way— To

— cling;— But, oh, I have a mag-ic way— To

* — cling;— But, oh, I have a mag-ic way— To

10

turn the gloom to cheer-ful day— I— sing.— I soft-ly—

turn the gloom to cheer-ful day— I— sing.— I soft-ly—

* turn the gloom to cheer-ful day— I— sing.— I soft-ly—

*Option for Altos to sing cue notes if desired

12

Three vocal staves and piano accompaniment for measures 12-13. The vocal parts are marked "sing." and "Sing!". The piano part consists of a treble and bass clef.

14

Three vocal staves and piano accompaniment for measures 14-15. The vocal parts are marked "Sing!". The piano part consists of a treble and bass clef.

PREVIEW

16

Sing!

Sing!

Sing!

cel.

18

I sing.

I sing.

I sing.

accel.

The image shows a musical score for three vocal parts and piano accompaniment. The score is divided into two systems, measures 16-17 and 18-19. The vocal parts are written in treble clef, and the piano accompaniment is in grand staff (treble and bass clefs). The lyrics are 'Sing!' in measures 16-17 and 'I sing.' in measures 18-19. Performance markings include 'cel.' (crescendo) and 'accel.' (accelerando). A large diagonal watermark 'PREVIEW' is overlaid on the score.

20 *mf* Moving now ♩ = 85

And if the way grows dark-er still,

And if the way grows dark-er still,

And if the way grows dark-er still,

mf Moving now ♩ = 85

Shad - owed by Sor-row's som - ber wing, With

Shad - owed by Sor-row's som - ber wing, With

Shad - owed by Sor-row's som - ber wing; With

It is illegal to duplicate this piece by photocopying or any other means.
Those violating the copyright will be punished to the full extent of the law.
© Copyright 2023 for ALL COUNTRIES by Santa Barbara Music Publishing, Inc.

*Option for Altos to sing cue notes if desired

25

glad de - fi - ance in my throat, I pierce the dark-ness with a note, And

glad de - fi - ance in my throat, I pierce the dark-ness with a note, And

glad de - fi - ance in my throat, I pierce the dark-ness with a note, And

The musical score for measures 25-26 features three vocal staves and a piano accompaniment. The vocal parts are in treble clef, and the piano accompaniment is in grand staff. The lyrics are: "glad de - fi - ance in my throat, I pierce the dark-ness with a note, And". The piano accompaniment consists of chords and moving lines in both hands.

27

— sing, — and — sing. —

— sing, — and — sing. —

— sing, — and — sing. —

The musical score for measures 27-28 features three vocal staves and a piano accompaniment. The vocal parts are in treble clef, and the piano accompaniment is in grand staff. The lyrics are: "— sing, — and — sing. —". The piano accompaniment consists of chords and moving lines in both hands.

Broadly

f

29

Sing!
Sing!
Sing!

Three vocal staves (Soprano, Alto, Tenor) with lyrics "Sing!". Each staff begins with a dynamic marking **f**. The notes are: Soprano (G4, A4, B4, C5), Alto (G4, A4, B4, C5), Tenor (G4, A4, B4, C5). A large slur covers all three staves.

Broadly

Piano accompaniment for measures 29-30. The right hand features a steady eighth-note accompaniment. The left hand has a bass line with chords and a final whole note chord.

31

Sing!
Sing!
Sing!

Three vocal staves with lyrics "Sing!". The notes are: Soprano (G4, A4, B4, C5), Alto (G4, A4, B4, C5), Tenor (G4, A4, B4, C5). A large slur covers all three staves.

Piano accompaniment for measures 31-32. The right hand features a steady eighth-note accompaniment. The left hand has a bass line with chords and a final whole note chord.

PREVIEW

33

Sing! And

Sing! And

Sing! And

35

— sing! — And — sing! — And

— sing! — And — sing! — And

— sing! — And — sing! — And

Letting up, rit.

37

Three vocal staves in treble clef with a key signature of three sharps (F#, C#, G#). The music features a melodic line with a fermata over the first measure. The lyrics are: "sing, and sing, sing, and sing, sing, and sing,".

Letting up, rit.

Piano accompaniment for measures 37-39. The right hand plays chords and moving lines, while the left hand plays a steady bass line. The tempo is marked "Letting up, rit.".

40

Three vocal staves in treble clef with a key signature of three sharps. The music continues with a melodic line and fermatas. The lyrics are: "and sing... and sing... and sing...". Dynamics include *p* (piano).

Piano accompaniment for measures 40-42. The right hand plays chords and moving lines, while the left hand plays a steady bass line. The tempo is marked "Letting up, rit." and the dynamics include *mp* (mezzo-piano).

It is illegal to duplicate this piece by photocopying or any other means.
Those violating the copyright will be punished to the full extent of the law.
© Copyright 2023 for ALL COUNTRIES by Santa Barbara Music Publishing, Inc.

Easy ♩ = 75 Sweeping

46 *mp*
the bro - ken past, Nor
mp
...Brood not o'er the bro - ken past, Nor
mp
the bro - ken past, Nor
mp

*Optional divisi

Faster ♩ = 90

49

dread what - ev - er time may bring; No

dread what - ev - er time may bring; No

dread what - ev - er time may bring; No

Faster ♩ = 90

With energy!

52

nights are dark, no days are long, While

nights are dark, no days are long, While

nights are dark, no days are long, While

With energy!

54

in my heart there swells a song...

in my heart there swells a song...

in my heart there swells a song...

Soaring!

56

Sing! And I can...

Sing!

Sing!

Soaring!

8vb

58

sing!

Sing!

Sing!

8vb

60

Sing, *mp* and

Sing, *mp* and

Sing, *mp* and

