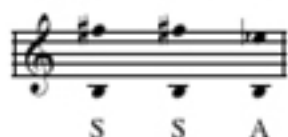


Commissioned by the Little Singers of Yokosuka Arts Theatre
 under Conductor Masahiro Takeda on the occasion of their 20th year anniversary.

Little Lamb

Dedicated to Prof. Tom Shelton



William Blake

Alejandro D. Consolacion II

Simple and unhurried ♩ = 68

Piano *mp sempre legato*

5 Tutti *mp legato espress.*

S A
 Lit - tle Lamb who made thee.

9
 S A
 Dost thou know who made thee.

It is illegal to duplicate this piece by photocopying or any other means.
 Those violating the copyright will be punished to the full extent of the law.
 © Copyright 2016 for ALL COUNTRIES by Santa Barbara Music Publishing, Inc.
 Printed in the U.S.A.

13 *cresc.*

Soprano: Gave thee life and bid thee feed. By the stream and o'er the mead;

Piano: *mp*

17 *poco a poco dim.*

Soprano: Lit - tle Lamb who made thee.

Piano: *poco a poco dim.*

21 *p poco a poco dim. poco rit.*

Soprano: Dost thou know who made thee.

Piano: *p poco a poco dim. poco rit.*

Sopranos *Cantabile* $\text{♩} = 74$
mp moving forward

25 $\text{♩} = 74$

Soprano: Gave thee clo-thing of de-light, Soft - est clo-thing woo-ly bright;

Piano: *mp*

29

S *mf* Lit - tle

A *mp* *poco cresc.* *mf*
 Gave thee such a ten - der voice, Ma - king all the vales re - joi - ce! Lit - tle

33

S *dim.*
 Lamb_ who made thee Dost thou know who made thee,

A *dim.*
 Lamb who made thee Dost thou know who made thee,

For Perusal Only

37 *Tutti mp* *rit.*

S *rit.*
 Dost know_ made_ thee.

A *mp* *rit.*

41 **Tranquilo** $\text{♩} = 70$
p simply

S
A
Lit - tle Lamb _____ I'll tell thee, _____

Tranquilo $\text{♩} = 70$
8^{va}

p

sim.

45 *mf*

S
A
Lit - tle Lamb _____ I'll tell thee! _____ He is

(8^{va})

For Perusal Only

49 *moving forward* *dim.*

S
A
called by thy name, For he calls him - self a Lamb;

mf moving forward

53 **Steady** **Più mosso** **accel.**

S
A

Lit-tle Lamb I'll tell thee.

Steady **Più mosso** **accel.**

mp *mf*

57

Steady ♩ = 78

f

For Perusal Only

59

sub. p

63 **Altos** ***mp dolce***

A

He is meek and he is mild, He be-came a lit-tle child:

p

67 Sopranos *mf dolce* rit.

I a child and thou a Lamb, We are called _____ by his name.

rit. *cresc.*

71 Broadly ♩ = 70 *ff*

S Lit-tle Lamb God bless thee, Lit-tle Lamb God bless thee,

A Lit-tle Lamb God bless thee, Lit-tle Lamb God bless thee,

Broadly ♩ = 70 *ff*

For Perusal Only

© protection

79 Sopranos *mf dolce* ♩ = 70

Lit - tle Lamb who made thee.

mf legato espress.

83 Altos *mf* rit.

Dost thou know who made thee.

rit.

87 *Tutti* **Slower** $\text{♩} = 65$
mp legato

S A
 Lit-tle Lamb who made thee, who made _____ thee, who made _____

92 *dim.* **Freely** *p* **Calm** $\text{♩} = 67$

S A
 thee, who made thee. _____

Freely **Calm** $\text{♩} = 67$
mp

97 **rit.**

p