

Commissioned by Ellensburg High School Chamber Choir
Gay Ott, Director

Prayer

St. Francis of Assisi

Vijay Singh
(ASCAP)

Reverently $\text{♩} = 63$

mp

Soprano
Lord, make me an in-stru-ment of peace, Where there is

Alto
Lord, make me an in-stru-ment of thy peace, Where there is

Tenor
Lord, make me an in-stru-ment of peace, Where there is

Bass
Lord, make me an in-stru-ment of thy peace, Where there is

Reverently $\text{♩} = 63$

Piano for rehearsal

It is illegal to duplicate this piece by photocopying or any other means.

Those violating the copyright will be punished to the full extent of the law.

© Copyright 2013 for ALL COUNTRIES by Santa Barbara Music Publishing, Inc.

Printed in the U.S.A.

4

ha - tred, ha - tred, let me sow love, love; _____

ha - tred, ha - tred, let me sow love, love; _____

ha - tred, ha - tred, let me sow love, love; _____

ha - tred, ha - tred, let me sow love, love; _____

For Perusal Only

8

Where there... is in - ju - ry, par - don; Where there... is doubt, bring

Where there... is in - ju - ry, par - don; Where there... is doubt, bring

Where there... is in - ju - ry, par - don; Where there... is doubt, bring

Where there... is in - ju - ry, par - don; Where there... is doubt, bring

11

faith. Lord, make me an in - stru - ment of thy

faith. Lord, make me an in - stru - ment of thy

faith. Lord, make me an in - stru - ment of thy

faith. Lord, make me an in - stru - ment of thy

For Perusal Only

13

peace, Where there is des - pair,

peace, Where there is des - pair,

peace, Where there is des - pair,

peace, Where there is des -

16

Where there is des-pair, bring hope; Where there is dark - ness, ___

Where there is des-pair, bring hope; ___ Where there is

Where there is des-pair, bring hope;

pair, bring hope;

For Perusal Only

19

Where there is dark - ness, ___ Where there is, Where there is dark - ness,

dark - ness, Where there is dark - ness,

Where there is dark - ness, Where there is dark - ness,

Where there is dark - ness, dark - ness, ___

21

mp Light, Light, *p* Ethereal Lux, Lux,

Light Light Lux, Lux,

mp Light, Light, *p* Lux, Lux,

Light, Light, Lux, Lux,

mp Light, Light, *p* Lux, Lux,

Light, Light, Light, Light,

For Perusal Only

25

Lux, Lux, Lux, Lux,

Lux, Lux, Lux, Lux,

Lux, Lux, Lux, Lux,

Lux, Lux, Lux, Lux,

Lux, Lux, Lux, Lux,

Lux, Lux, Lux, Lux,

29

Lux, Lux, Lux,
Lux, Lux, Lux,
Lux, Lux, Lux,
Lux, Lux, Lux,
Lux, Lux, Lux,

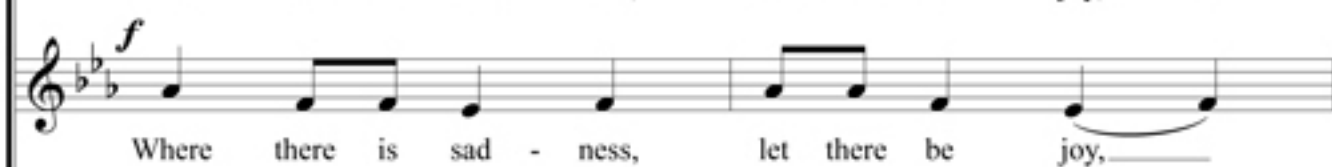
32

Lux, Lux, Lux, *rit.*
Lux, Lux, Lux, *rit.*
Lux, Lux, Lux, *rit.*
Lux, Lux, Lux,
Lux, Lux, Lux, *rit.*

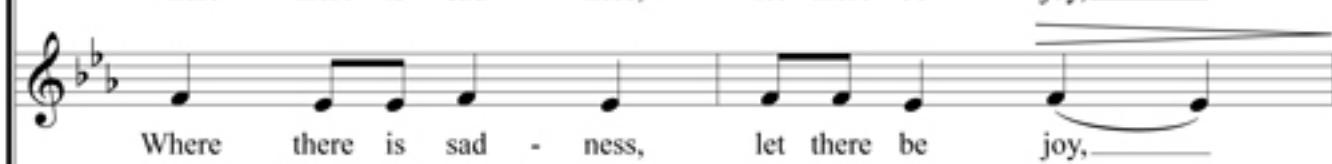
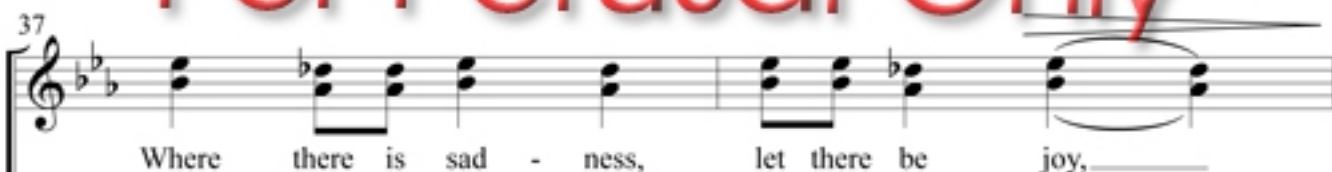
A tempo

Light,

Light,

**A tempo**

For Perusal Only



© protection

Piano introduction for the first system of the score, featuring a treble and bass clef with a key signature of two flats.

41

Joy *ff*

love as to love, — love as to love, Love!

— let there be — joy, — Love!

love as to love, love as to love, — Love!

O Di-vine Mas - ter, — let there be — joy. Love!

Detailed description of the second system: This system contains measures 41 through 44. It features three vocal staves (Soprano, Alto, and Tenor/Bass) and a piano accompaniment. The lyrics are: 'love as to love, — love as to love, Love!' for the first two vocal parts; '— let there be — joy, — Love!' for the second two vocal parts; and 'love as to love, love as to love, — Love!' for the third vocal part. The piano accompaniment provides harmonic support. Dynamics include 'ff' (fortissimo) for the vocal entries. The system concludes with a double bar line and repeat signs.

44

Love! Love!

Love! Love!

Love! Love!

Love! Love!

For Perusal Only

47

mp Lord, make me an in - stru - ment of

mp Lord, make me an in - stru - ment of thy

mp Lord, make me an in - stru - ment of

mp Lord, make me an in - stru - ment of thy

49

peace. A - - - men,

peace. A - - - men,

peace. A - - - men,

peace. A - - - men,

For Perusal Only

52

p A - - - men, *pp* A - - - men.

p A - - - men, *pp* A - - - men

p A - - - men, *pp* A - - - men

p A - - - men, *pp* A - - - men